

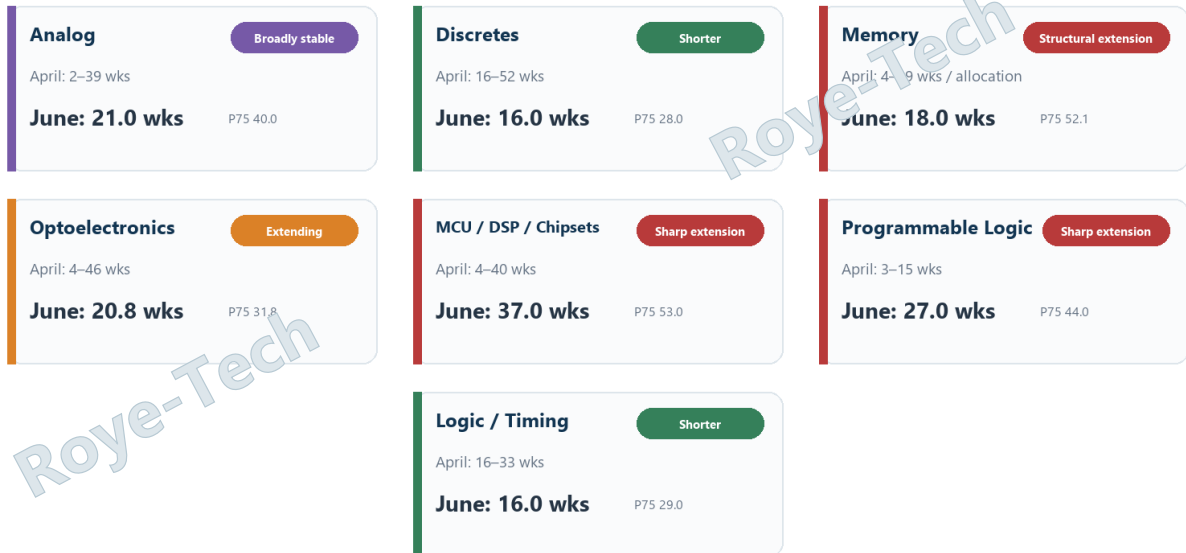
June 2026

Component Lead-Time Trend Report

Insights from multiple Top-50 EMS customers, manufacturers and supply channels

June 2026 Component Lead-Time Dashboard

April manufacturer guidance vs. June feedback from multiple Top-50 EMS customers



Market Direction

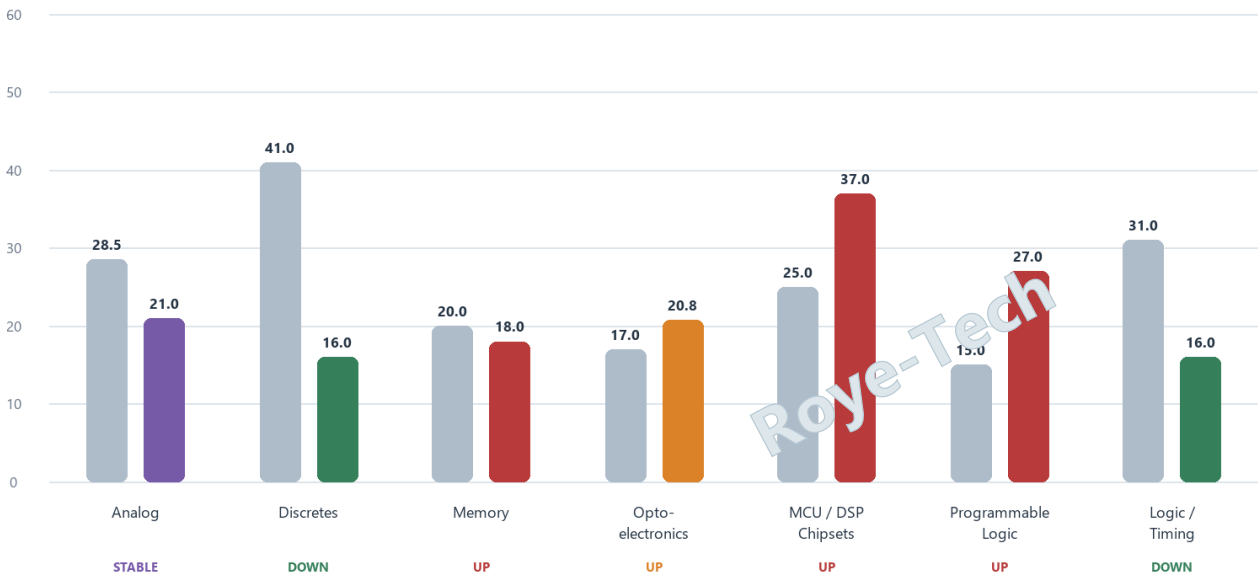
The market is not uniformly tight; risk is concentrated by manufacturer and product line

Key view: Lead times continue to extend for programmable logic, MCU chipsets, industrial memory, selected analog power and optoelectronics. Discretes and standard logic are easing overall, although several manufacturers remain elevated.

Lead-Time Change by Component Category

April range ceiling vs. June median lead time (weeks)

April ceiling June median



Roye-Tech

Largest increase

Programmable Logic

5-15 wks in April → 27 wks in June

Highest risk

MCU / Chipsets

37-week median; P75 reaches 53 weeks

Most fragmented

Memory

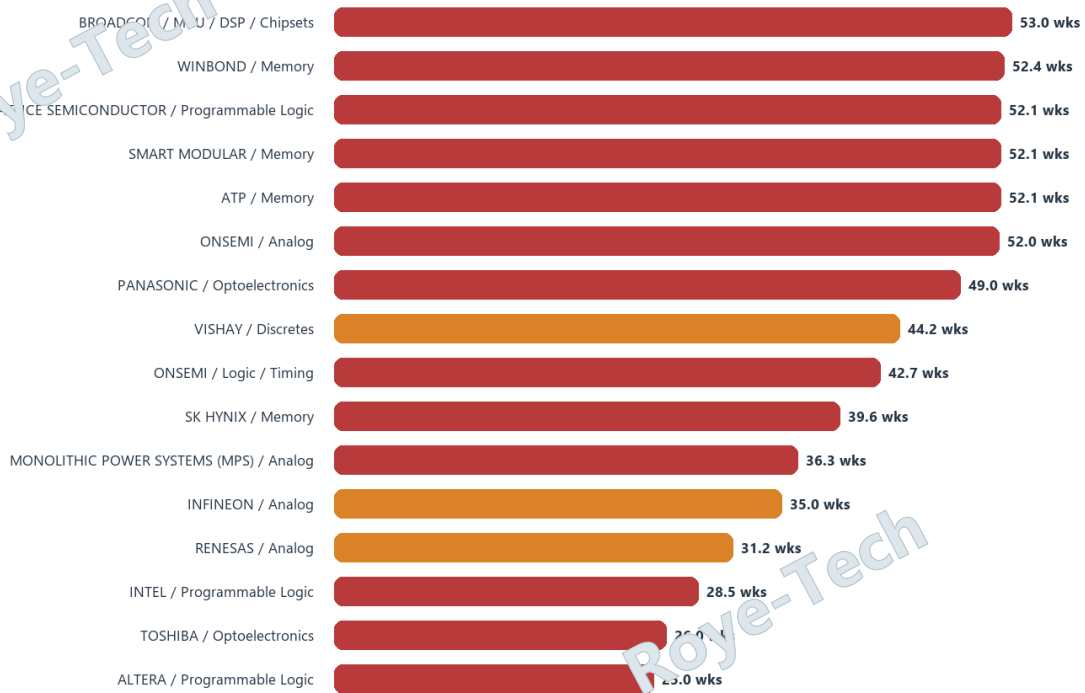
Commercial supply is mixed; industrial products near 52 weeks

Manufacturer Lead-Time Watchlist

Ranked by June median lead time reported across customer supply chains

Manufacturer Lead-Time Watchlist

Ranked by June median lead time; red indicates the highest planning risk



Priority coverage: Broadcom chipsets, Lattice FPGA, onsemi analog/logic, Winbond/ATP/SMART industrial memory and Panasonic optoelectronics.

Close monitoring: ADI high-end analog, Infineon power, MPS power, Renesas analog/timing and Micron long-tail memory products.

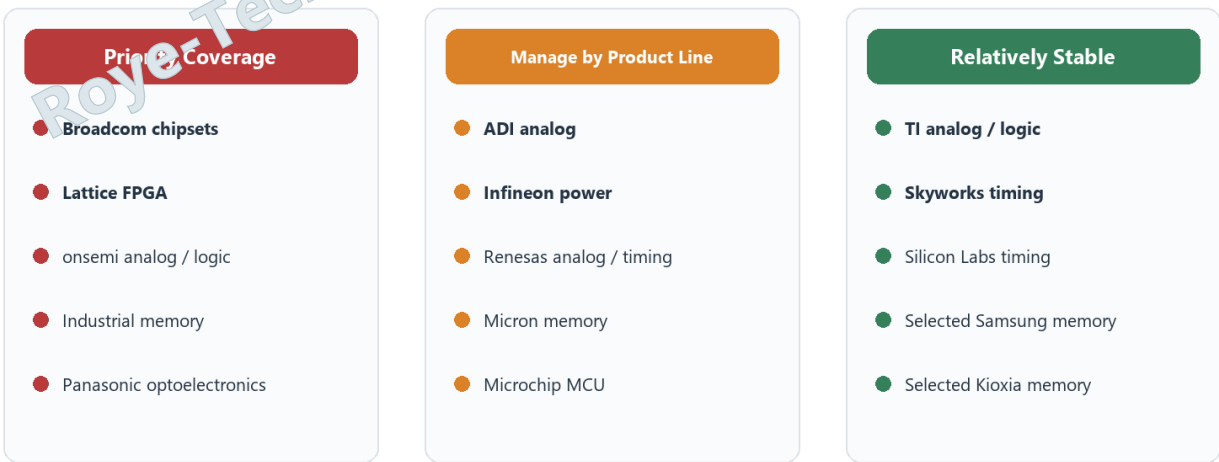
June Supply-Risk Map

Lead-time planning should be managed by product line, not by manufacturer alone

Roye-Tech

June Supply-Risk Map

Planning priority by manufacturer and product line



Roye-Tech



Seven-Category Summary

Change from April manufacturer guidance to June customer-reported lead times

	<p>Analog 14–29 wks → 21 wks</p> <p>P75 has reached 40 weeks; selected ADI, Infineon, MPS and onsemi lines remain elevated.</p>	<p>Broadly stable</p>
	<p>Discretes 21–41 wks → 16 wks</p> <p>Nexperia remains near 2 weeks; selected onsemi, Vishay and ST lines remain elevated.</p>	<p>Easing overall</p>
	<p>Memory Allocation → 18 wks</p> <p>Selected Samsung/Kioxia lines are stable, while industrial memory remains close to 52 weeks.</p>	<p>Structurally tight</p>
	<p>Optoelectronics 7–17 wks → 21 wks</p> <p>Couplers and selected optical products remain tight; Panasonic is near 49 weeks.</p>	<p>Extending</p>
	<p>MCU / Chipsets 16–25 wks → 37 wks</p> <p>Broadcom is near 53 weeks; selected ST products are close to 52 weeks.</p>	<p>Sharp extension</p>
	<p>Programmable Logic 5–15 wks → 27 wks</p> <p>Lattice is near 52 weeks, Intel 29 weeks and Altera 25 weeks.</p>	<p>Sharp extension</p>
	<p>Logic / Timing 17–31 wks → 16 wks</p> <p>TI, Skyworks and Silicon Labs are stable; onsemi remains near 43 weeks.</p>	<p>Easing overall</p>

June Procurement Priorities

Translate lead-time movement into concrete supply-chain actions

01

Build a priority coverage list

Prioritize Lattice, Broadcom chipsets, onsemi analog/logic, industrial memory and Panasonic optoelectronics.

02

Extend memory forecasts into 2027

Industrial, embedded and enterprise memory should not depend on short-notice upside or spot availability.

03

Start alternate qualification early

Launch qualification for FPGA, MCU, chipsets, optocouplers and industrial memory where P75 exceeds 40 weeks.

04

Manage lead time by product line

A single manufacturer can have products at 11 weeks and 53 weeks; one brand-level lead time will misstate risk.

Roye-Tech Supply Chain Intelligence

Tracking manufacturer capacity, authorized-channel lead times, Top-50 EMS feedback and spot-market movement to provide continuously updated supply-risk intelligence.

This report is intended for supply-chain trend reference. Actual lead times vary by part number, package, region and order confirmation.